

The Robert Jones and Agnes Hunt
Orthopaedic and District Hospital
NHS Trust



MIDLANDS CENTRE FOR SPINAL INJURIES

OUTREACH SERVICE

ALISON LAMB
CONSULTANT NURSE SPINAL INJURIES



delivering outstanding patient care

- ❑ Outreach at MCSI has been in place since 2000
- ❑ Outreach Team
- ❑ Outreach is provided for an approximate area 100 mile radius of Oswestry

Importance of outreach to MCSI

- No critical care on site
- Reduce the incidence of complications therefore length of stay
- To ensure appropriate admission
- To develop a link with our referring hospitals



Since the development of the National Spinal Cord Injury Strategy Board and the development of major trauma centres there has been an increased focus on outreach services for SCIC including CQUIN targets.

Outreach or admission within 7 days of referral or fit for transfer

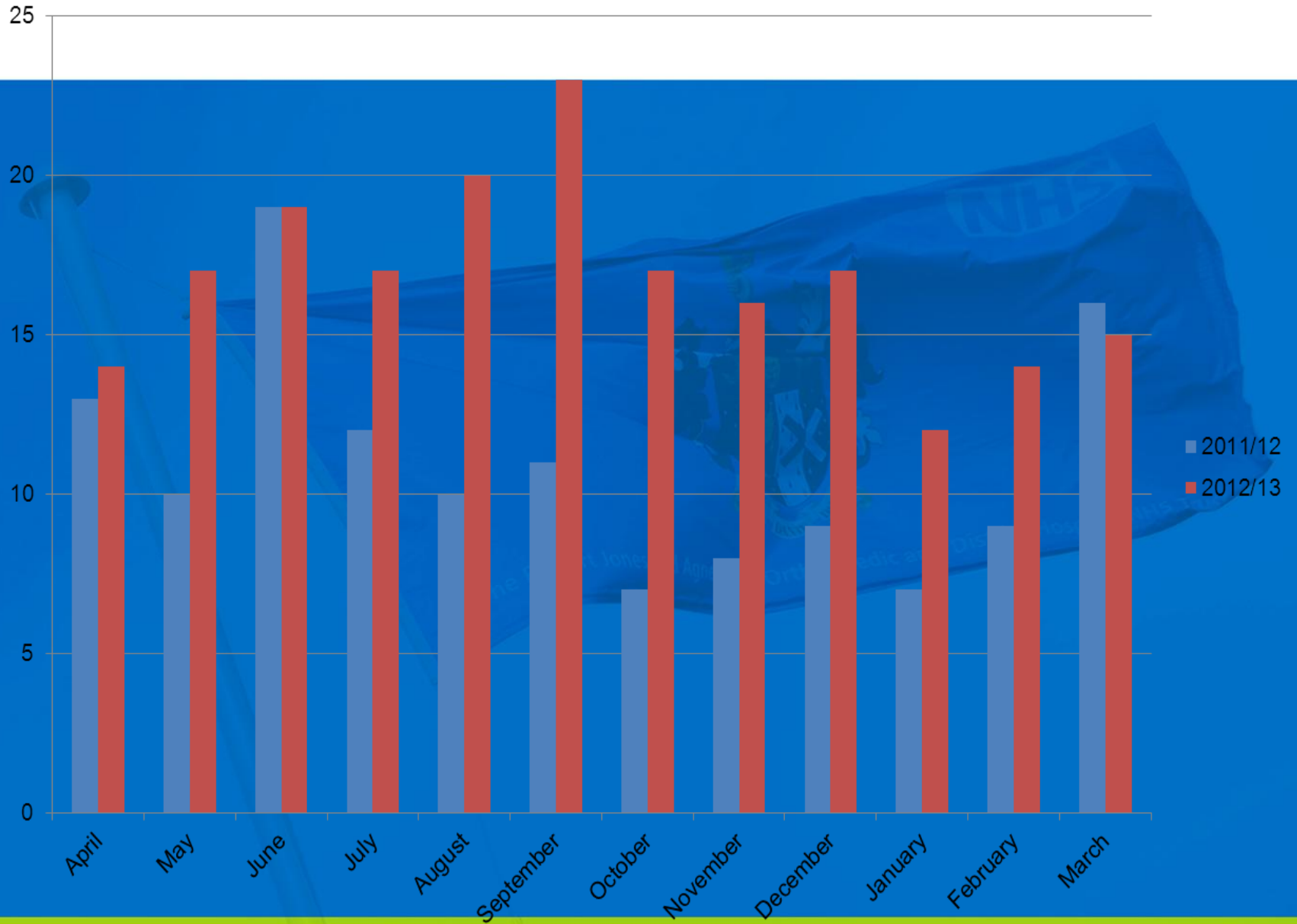


Overview 2012/13

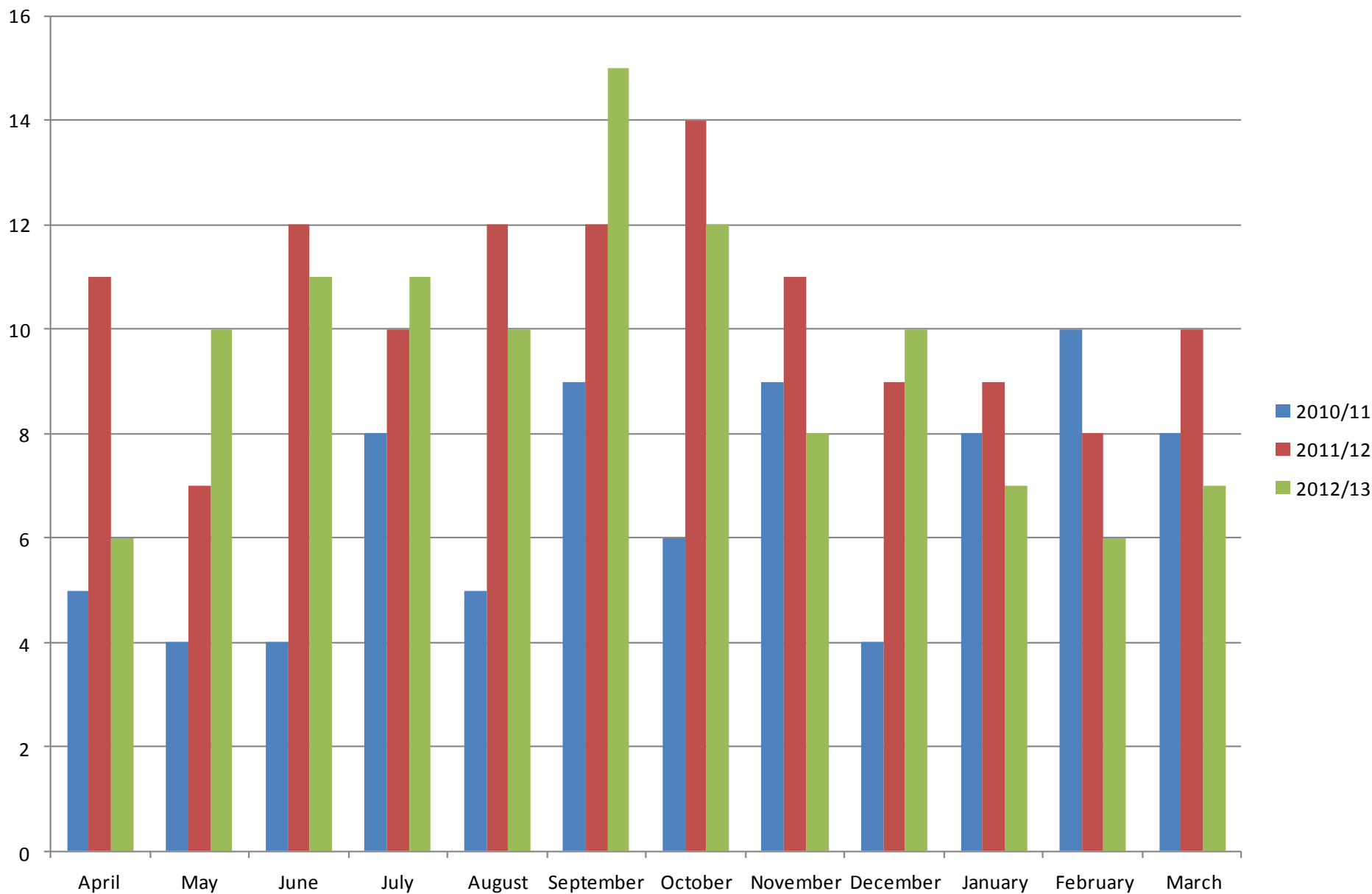
Total referrals received 198

Total admissions 116

Number of Referrals



Acute Admissions





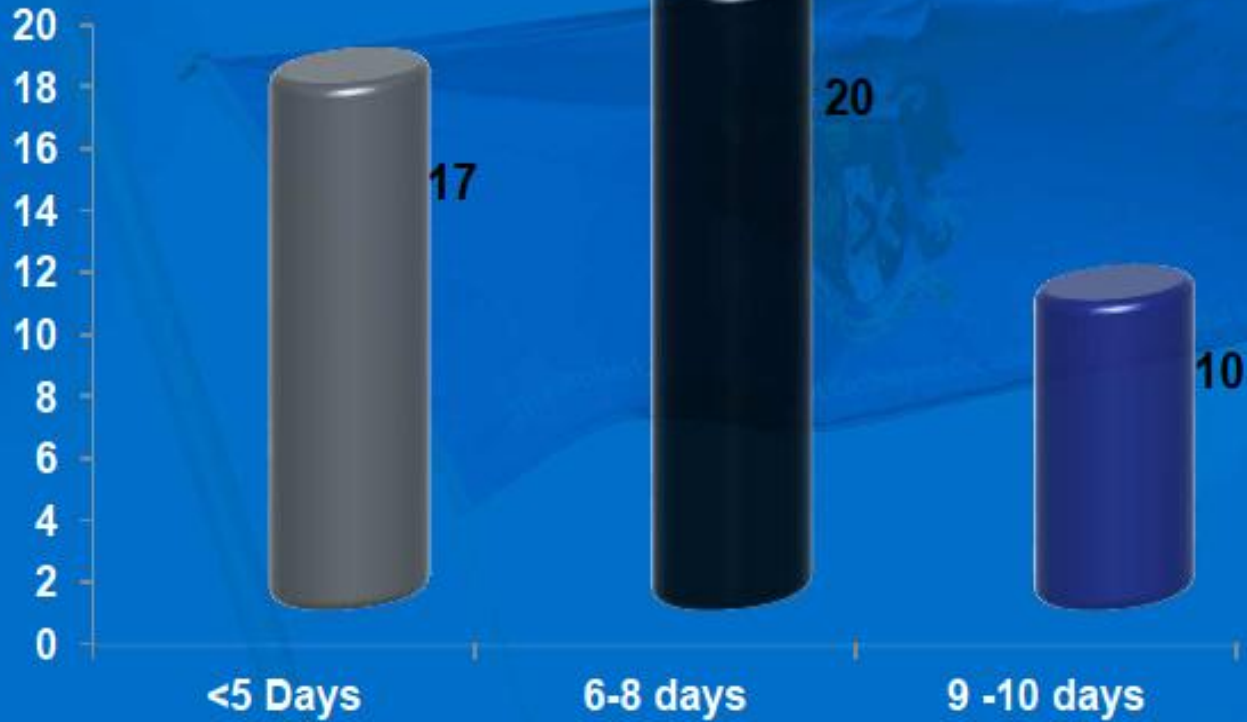
MAJOR TRAUMA CENTRES

University Hospital Birmingham

University Hospital of North Staffordshire

University Hospital Coventry & Warwickshire

Outreach Service





COMPLICATIONS

- 6 patients admitted with pressure sores/moisture lesions grade 2 & 3
- 6 patients admitted with chest infections
- 2 patients admitted with reducible upper limb contractures



What else have we done

- ❑ Updated the spinal care bundle (Best practise guidelines)
- ❑ Introduced treatment plans – sent within 24hrs of referral
- ❑ Multidisciplinary study days
- ❑ Developed competencies for nurses caring for SCI outside of a specialist centre
- ❑ Within our MTC's perform regular patient reviews with the trauma coordinators and rehabilitation consultants



Satisfaction with MCSI Outreach

- MTC Network meetings monthly
- MTC Governance meeting bimonthly

The Robert Jones and Agnes Hunt
Orthopaedic and District Hospital



NHS Trust

Thank You



delivering outstanding patient care